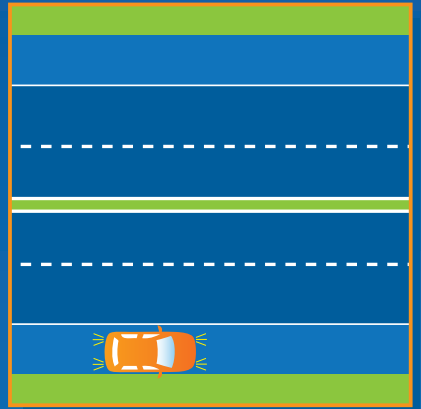


# STOP BY THE RULES

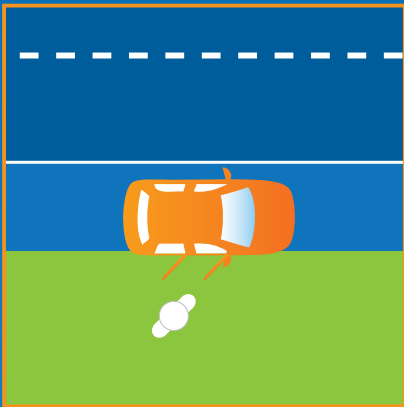
Never stop on the motorway except for the marked car parks.  
If in emergency....



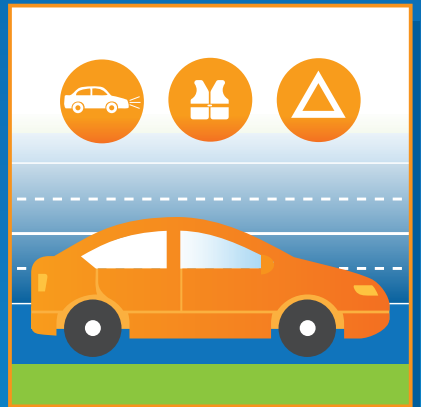
...stop only in the EMERGENCY LANE as far to the right as possible and SWITCH ON THE EMERGENCY LIGHTS.



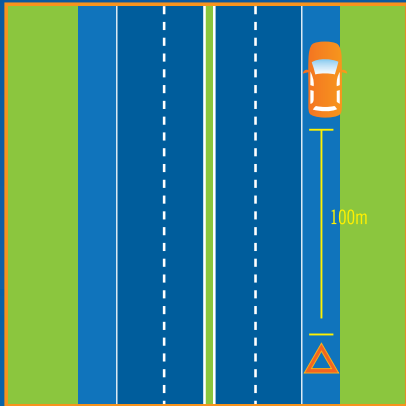
Leave the car immediately THROUGH THE RIGHT DOOR on the shoulder side and get your passengers to do the same. Take the passengers beyond the barrier line. Leave your pet in the car or if you take it with you, make sure it is always under your control.



REMEMBER! WARN OTHERS FIRST before you start inspecting your car for any damage. Wear a reflective vest, if you have one (to keep you safe!) and put up the warning triangle.



If you have stopped before a bend or hill, put up the triangle at a distance even larger than 100 m for extra safety - you must never put it RIGHT BEHIND YOUR CAR!



When moving along the road with the triangle STAY WITHIN THE EMERGENCY LANE or the green shoulder. Entering a live traffic lane you put yourself and others in real danger.

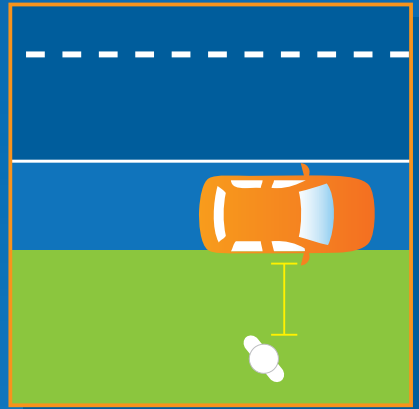


CALL FOR HELP. If anyone is injured, follow the road accident rules. Call the 112 emergency line using your mobile or one of the emergency roadside telephones provided on both sides of the motorway every 2 km. Notify the motorway services at the contact number printed on the ticket or call the Traffic Control Centre at 58 530 66 66.



Never cross the motorway to call for help. WAIT FOR ASSISTANCE in the green shoulder AT A SAFE DISTANCE FROM THE CAR .

SAFETY OF ALL ROAD USERS DEPENDS ON HOW WELL YOU WARN THEM.



Media patronage:

Radio Gdańsk

PIK  
POLSKIE RADIO

Substantive patronage:



Partners:

Wydział ruchu drogowego  
Komendy Powiatowej Policji w Świeciu

Wydział ruchu drogowego  
Komendy Miejskiej Policji w Grudziądzu